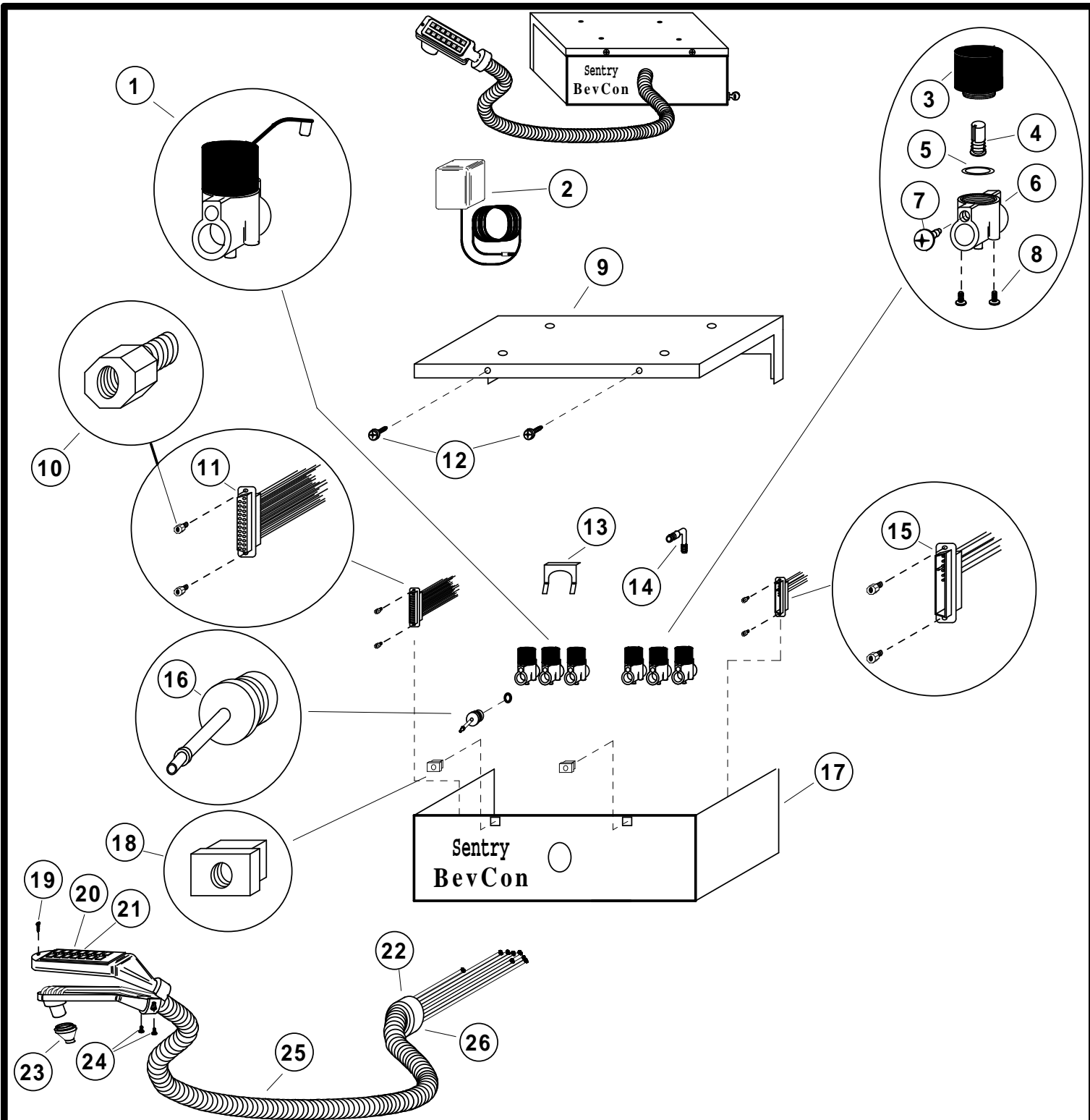


JS VALVE ASSEMBLY PARTS LIST						
SYM	PART #	DESCRIPTION	QTY JS-8R	QTY JS-10R	QTY JS-12R	QTY JS-14R
1	21005	VALVE ASSY W/METERING PIN	8	10	12	14
2	32155C	TRANSFORMER, 24VDC	1	1	1	1
3	21023	COIL, SOLENOID 24VDC W/WIRE LEADS (REPLACEMENT)	AS REQ'D	AS REQ'D	AS REQ'D	AS REQ'D
**	20053	DIFFUSER, SODA & WATER	1	1	1	1
4	21027	PLUNGER (REPLACEMENT)	AS REQ'D	AS REQ'D	AS REQ'D	AS REQ'D
5	21032	"O" RING (REPLACEMENT)	AS REQ'D	AS REQ'D	AS REQ'D	AS REQ'D
6		VALVE BODY W/METERING PIN (REPLACEMENT)	AS REQ'D	AS REQ'D	AS REQ'D	AS REQ'D
7	40049	SCREW, 10-24 X 1/4 TH	16	20	24	28
8	40048	SCREW, 10-24 X 3/8 PAN HD	16	20	24	28
9	20057	CONTROL BOX TOP	1	1	1	1
10	40074	STAND OFF, 6-32 MALE-FEMALE NYLON	4	4	4	4
11	32189	CONN, 25 PIN SUB "D" (SWITCH PAK)	1	1	1	1
12	A-14	SCREW, #10 X 1/2" PH HD, S.S. COMBO	2	2	2	2
13	20009	CLIP, BEAUTY RING	1	1	1	1
14	21007	INLET FITTING, 90 DEGREE-1/4 HOSE	8	10	12	14
14	21021	INLET FITTING, 90 DEGREE-3/8 HOSE (OPTION)				
14	21033	INLET FITTING, 45 DEGREE-3/8 HOSE (OPTION)				
15	32188	CONNECTOR, 25 PIN SUB "D" (SOLENOIDS)				
16	21038	OUTLET, 1/8 TUBE PLASTIC	8	10	12	14
17	20056	CONTROL BOX	1	1	1	1
18	S-1325	SQUARE GROMMET NUT	2	2	2	2
19	40062	SCREW #6 7/8 S.S. SH METAL OVAL PH HD	1	1	1	1
20	12149	SWITCH PAK ASSY, JS-12R & JS-14R			1	1
21	12171	SWITCH PAK ASSY, JS-8R & JS-10R	1	1		
22	20026	BEAUTY RING (OUTER)	1	1	1	1
23	20054	NOZZLE	1	1	1	1
24	40061	SCREW #6 5/8 S.S. SH METAL OVAL PH HD	2	2	2	2
25	12146-1	FLEX HOSE ASSY 36"	1	1	1	1
25	12146-2	FLEX HOSE ASSY 48" (OPTION)				
**	20071	BRAND LABEL CARD	1	1	1	1
**	32190	PIN, CONTACT FOR SUB "D" CONN	AS REQ'D	AS REQ'D	AS REQ'D	AS REQ'D
**	32191	SOCKET, CONTACT FOR SUB "D" CONN	AS REQ'D	AS REQ'D	AS REQ'D	AS REQ'D
26	20027	BEAUTY RING INSERT (2 REQ.)	1 SET	1 SET	1 SET	1 SET
27	12044	JS REMOTE CONTROL BOX	1	1	1	1
**	44023	COMMAND BOARD	1	1	1	1
**	47005	#8 "O" RING FOR 21038	8	10	12	14

** - NOT SHOWN



INTERNATIONAL CARBONIC INC.



ADELANTO, CALIFORNIA

TITLE	JS VALVE ASSEMBLY
DATE	8/16/00
DRN. BY	GLW
CHK. BY	
APPR. BY	

